



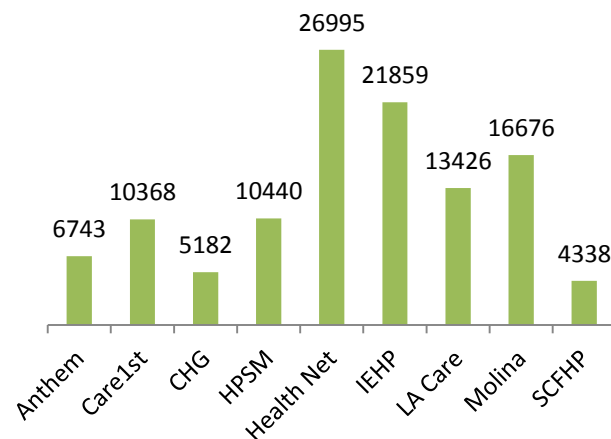
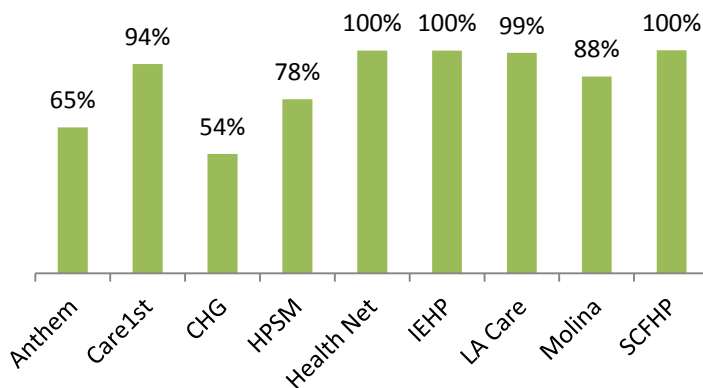
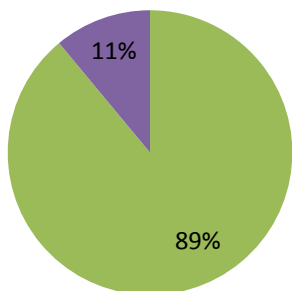
Cal MediConnect Health Risk Assessment (HRA) Dashboard (April 2014 – March 2015)



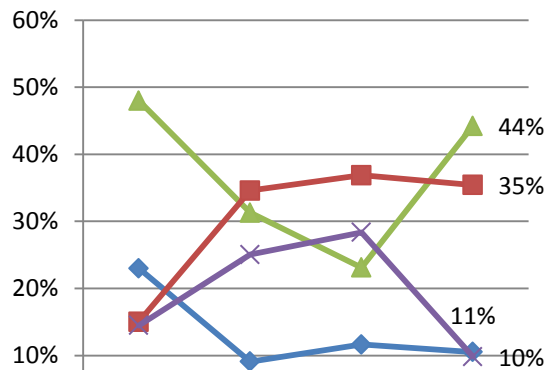
HRAs completed within 90 days of enrollment¹

Total # of members with 90 days of enrollment

■ % Completed ■ % Not Completed



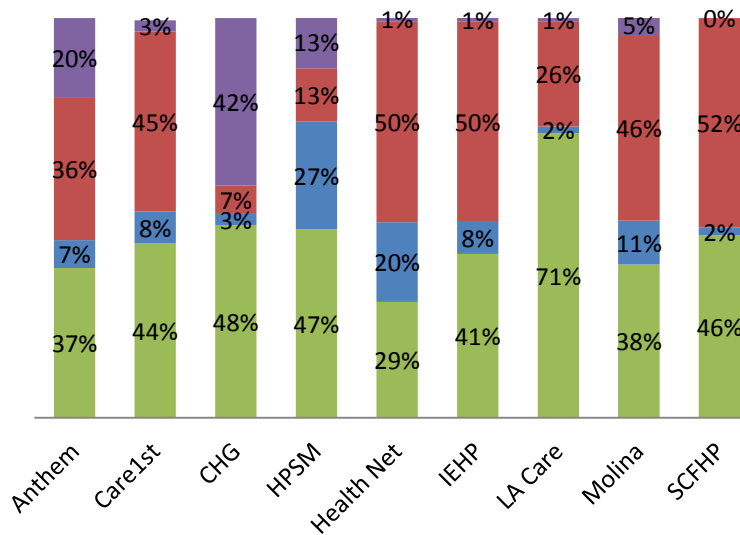
Quarterly Trending



HRAs	Q2'14	Q3'14	Q4'14	Q1'15
Completed	1453	7861	3956	31300
Unwilling	681	2283	1992	7448
Unreachable	455	8688	6308	25074
Not Completed	438	6290	4851	6949

Cumulative HRA breakdown²

■ Completed ■ Unwilling ■ Unreachable ■ Not Completed



Plan Key

Anthem	Anthem Blue Cross
CHG	Community Health Group
HPSM	Health Plan of San Mateo
IEHP	Inland Empire Health Plan
Molina	Molina Healthcare
SCFHP	Santa Clara Family Health Plan

Footnotes:

¹ Excludes beneficiaries who were unwilling to participate in a HRA or unreachable by the plan during the reporting period. All data is plan reported.

² Due to a systems issue, CHG was instructed to report zero for the unreachable population for Q2 and Q3 2014, causing the Not Completed % to increase.