



Cal MediConnect Health Risk Assessment (HRA) Dashboard (April 2014 – June 2015)

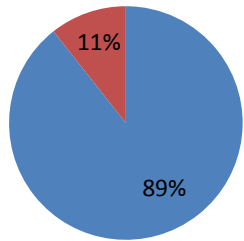


HRA's completed within 90 days of enrollment¹

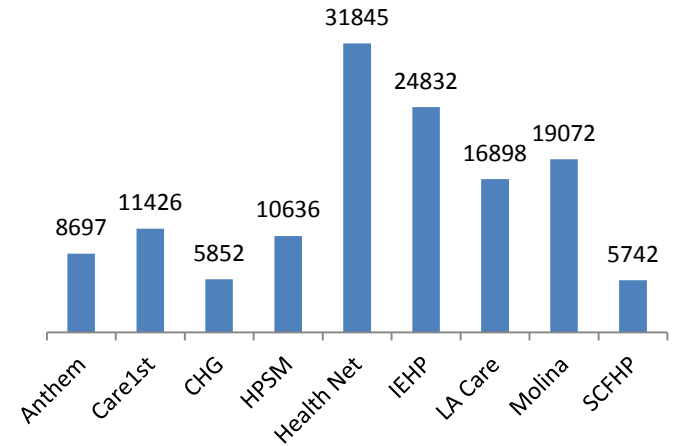
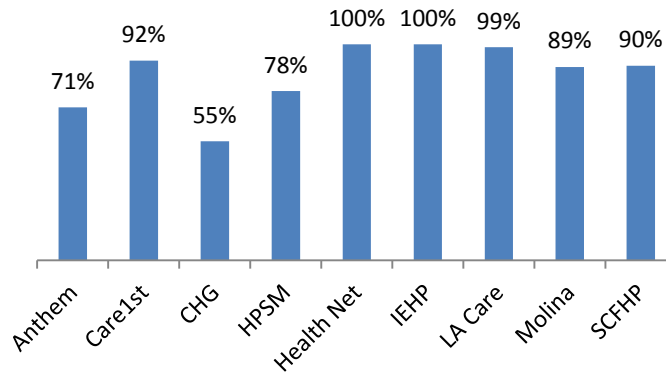
Total # of members with 90 days of enrollment

Overall

■ Completed ■ Not Completed



Per Plan

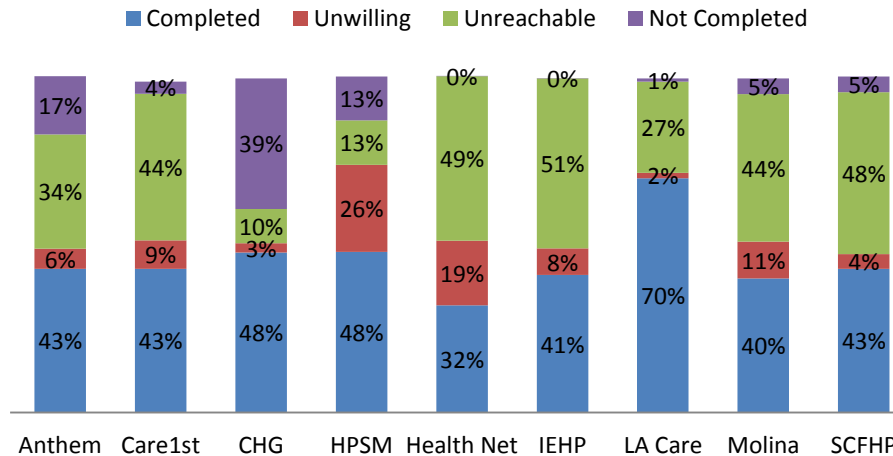
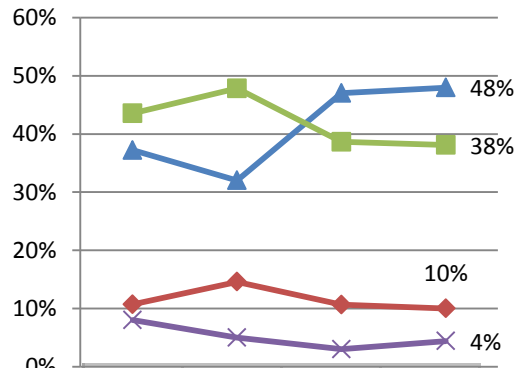


¹ Excludes beneficiaries who were unwilling to participate in a HRA or unreachable by the plan during the reporting period. All data is plan reported.

Quarterly Trending

Cumulative HRA breakdown²

Plan Key



Anthem	Anthem Blue Cross
CHG	Community Health Group
HPSM	Health Plan of San Mateo
IEHP	Inland Empire Health Plan
SCFHP	Santa Clara Family Health Plan

² Due to a systems issue, CHG was instructed to report zero for the unreachable population for Q2 and Q3 2014, causing the Not Completed % to increase.